

**State of Wyoming Corner Record**

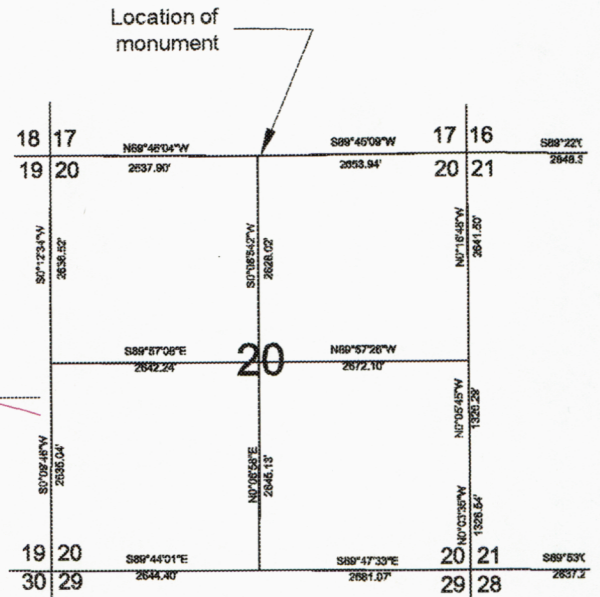
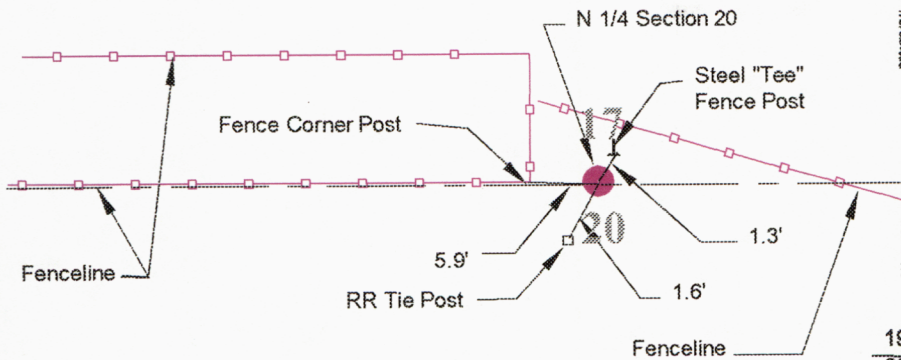
(In compliance with the *CORNER PERPETUATION AND FILING ACT*, Wyoming Statutes, 1997, Section 33-29-140 et. seq., and the Rules and Regulations of the Board of Registration for Professional Engineers and Professional Land Surveyors)

Reverse side of this form may be used if more space is needed.

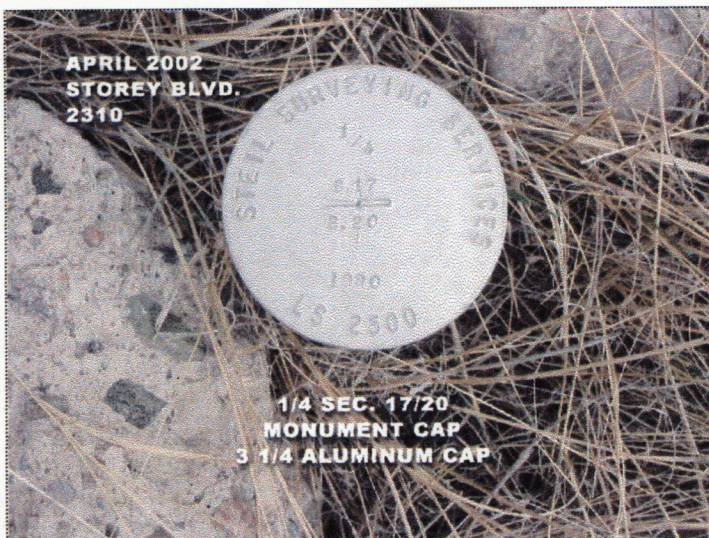
Record of original survey and citation of source of historical information (if corner is lost or obliterated). Description of corner monument evidence found and/or monument and accessories established to perpetuate the location of this corner. Sketch of relative location of monument, accessories, and reference points with course and distance to adjacent corner(s) (if determined in this survey). Method and rationale for reestablishment of lost or obliterated corner.

**Record: Set Granite Boulder 17 x 7 x 6**

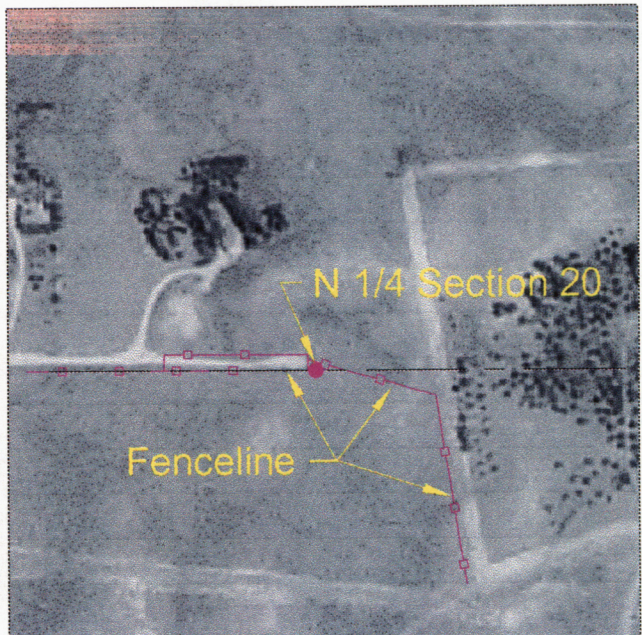
**Found: 3 1/4" Aluminum cap inscribed PLS 2500 as shown below**



**Corner Ties Detail**



**Cap Stamping Detail**



**Vicinity Map**

Date of Field Work: April 2002

Office Reference: 2310 - Storey Blvd

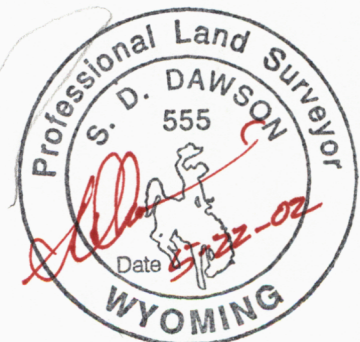
**CROSS INDEX DIAGRAM**

1	2	3	4	5	6	7	8	9	10	11	12	13	14	15	16	17	18	19	20	21	22	23	24	25	
A																									A
B																									B
C	6			5					4											3					C
D																					2				D
E																									E
F																									F
G																									G
H	7			8					9											10					H
I																									I
J																									J
K																									K
L	18								17											16					L
M																									M
N																									N
O																									O
P	19								20											21					P
Q																									Q
R																									R
S																									S
T																									T
U	30								29											28					U
V																									V
W																									W
X	31								32											33					X
Y																									Y
Z																									Z
	1	2	3	4	5	6	7	8	9	10	11	12	13	14	15	16	17	18	19	20	21	22	23	24	25

Firm/Agency, Address  
 Washington Infrastructure Services  
 5920 Yellowstone Road  
 Cheyenne, Wyoming 82009  
 Telephone Number: 307-634-1101

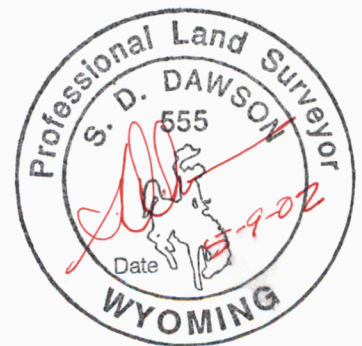
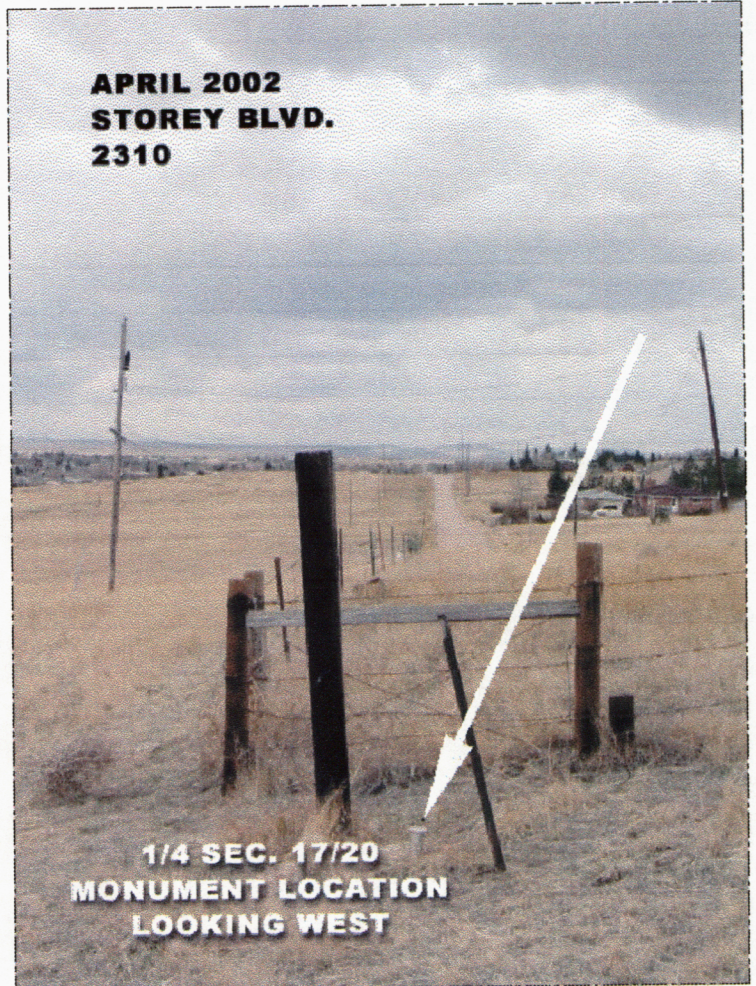
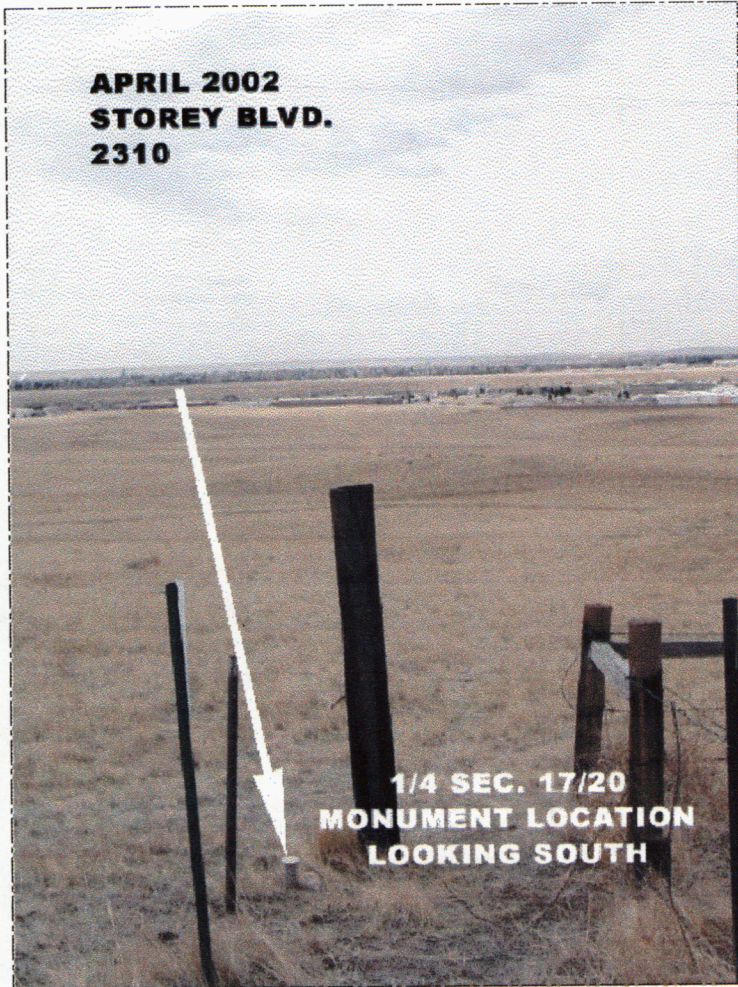
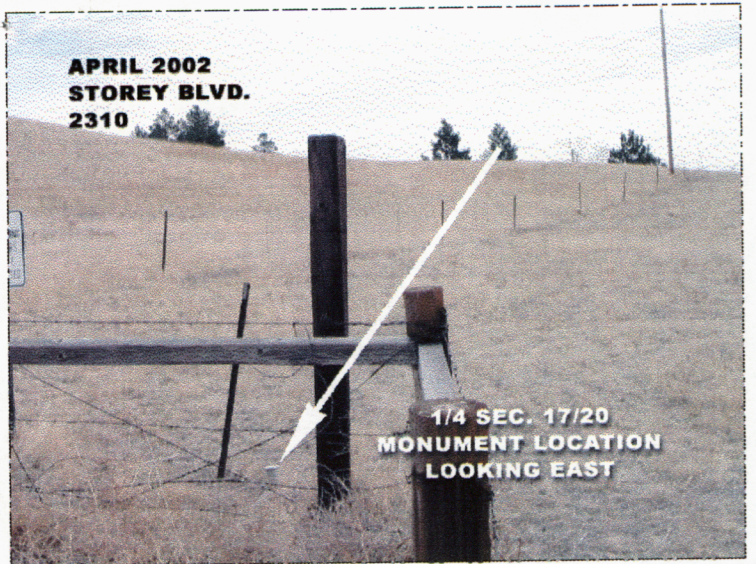
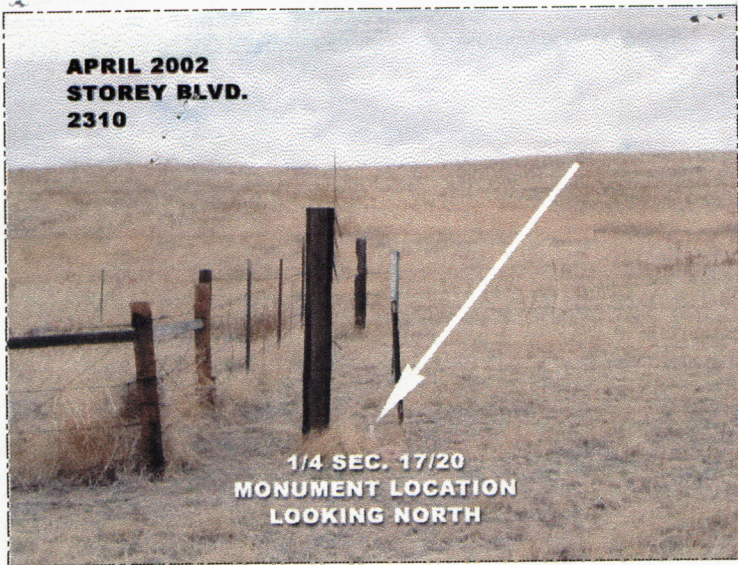
This corner record was prepared by me or under my direction and supervision.

SEAL & SIGNATURE



Corner Name: N 1/4 Corner of Section 20  
 SBRPEPLS/PLSW: March 1994; PLSW January 1998

Section: 20 T14N R66W ; 6th P.M. Cross-Index No.: N-7



N 1/4 Corner of Section 20

20

14N 66W 6th

N-7